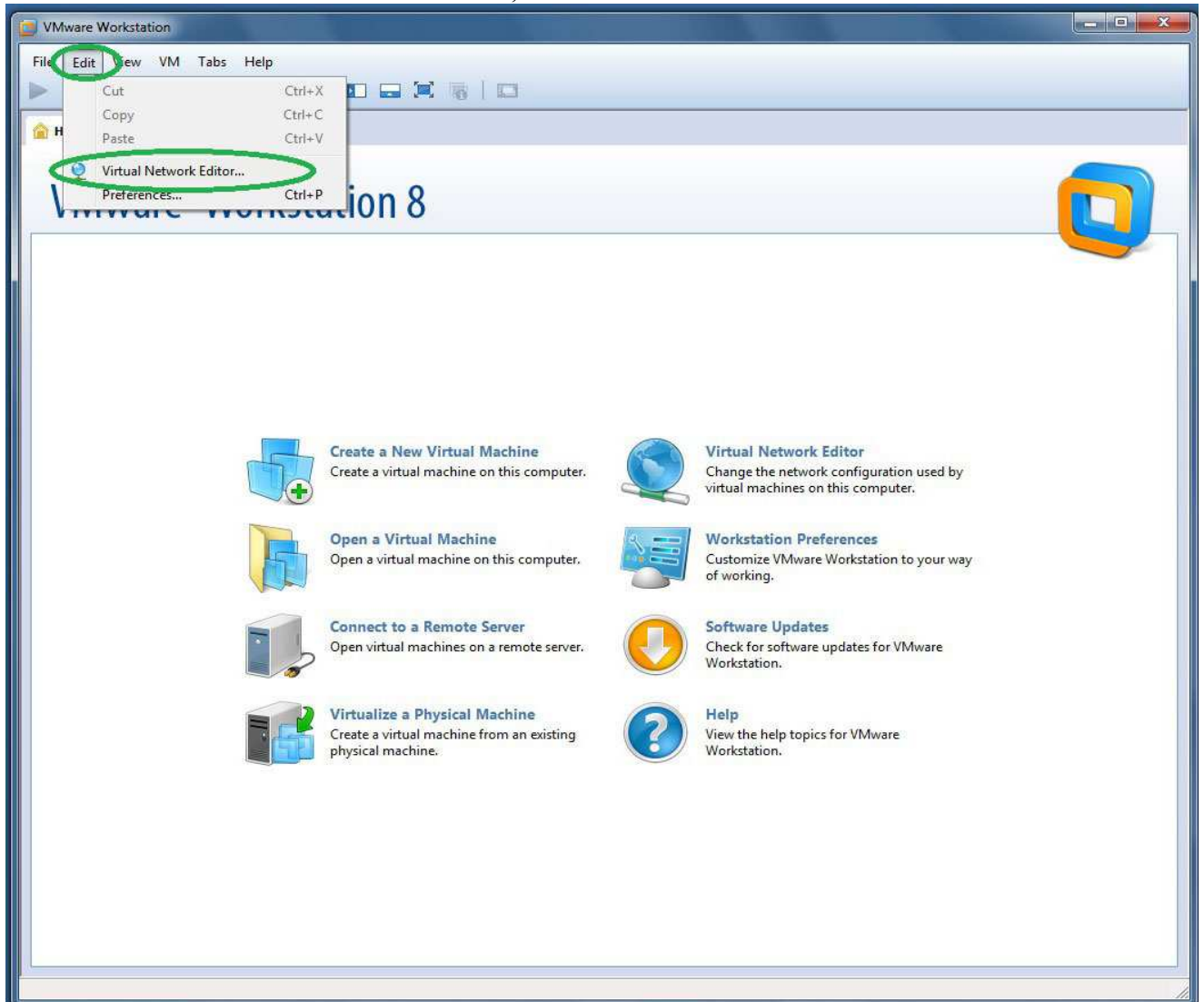


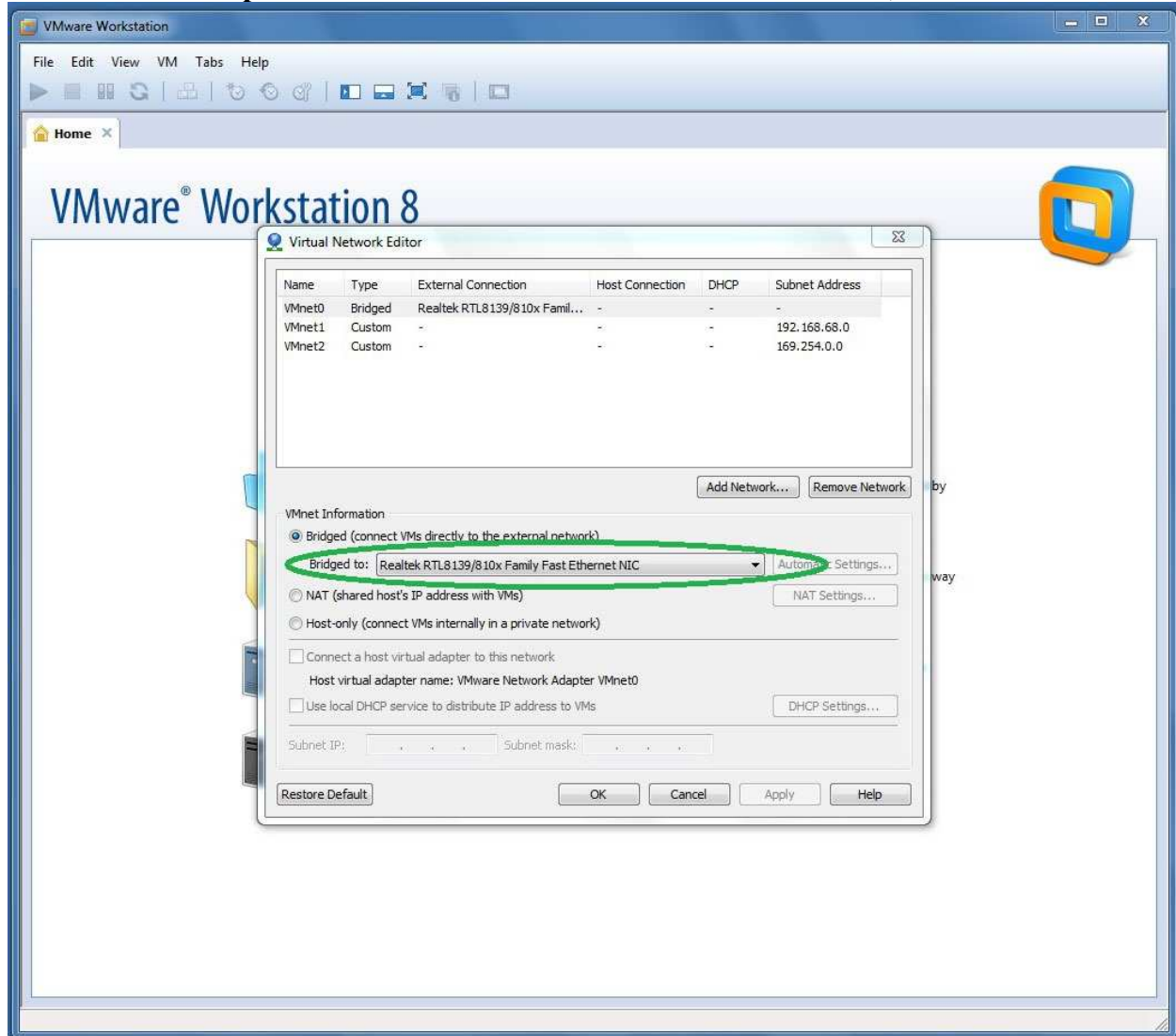
BMW ISID and ISSS for ICOM Emulator with OPS configuration manual

1. Unpack ISID or ISSS from archives.

2. Install VMware Workstation version 8, run and select Virtual Network Editor.

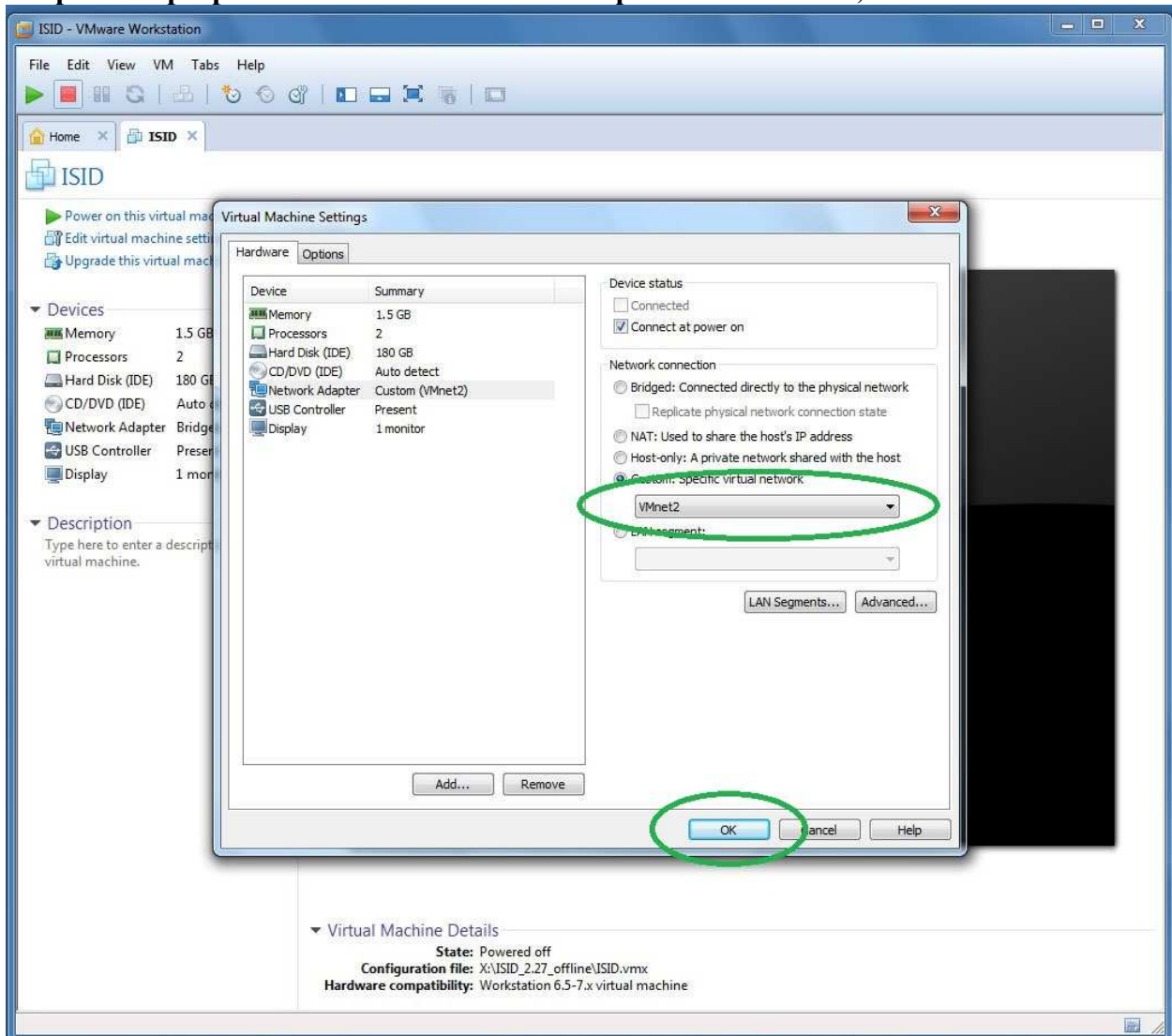


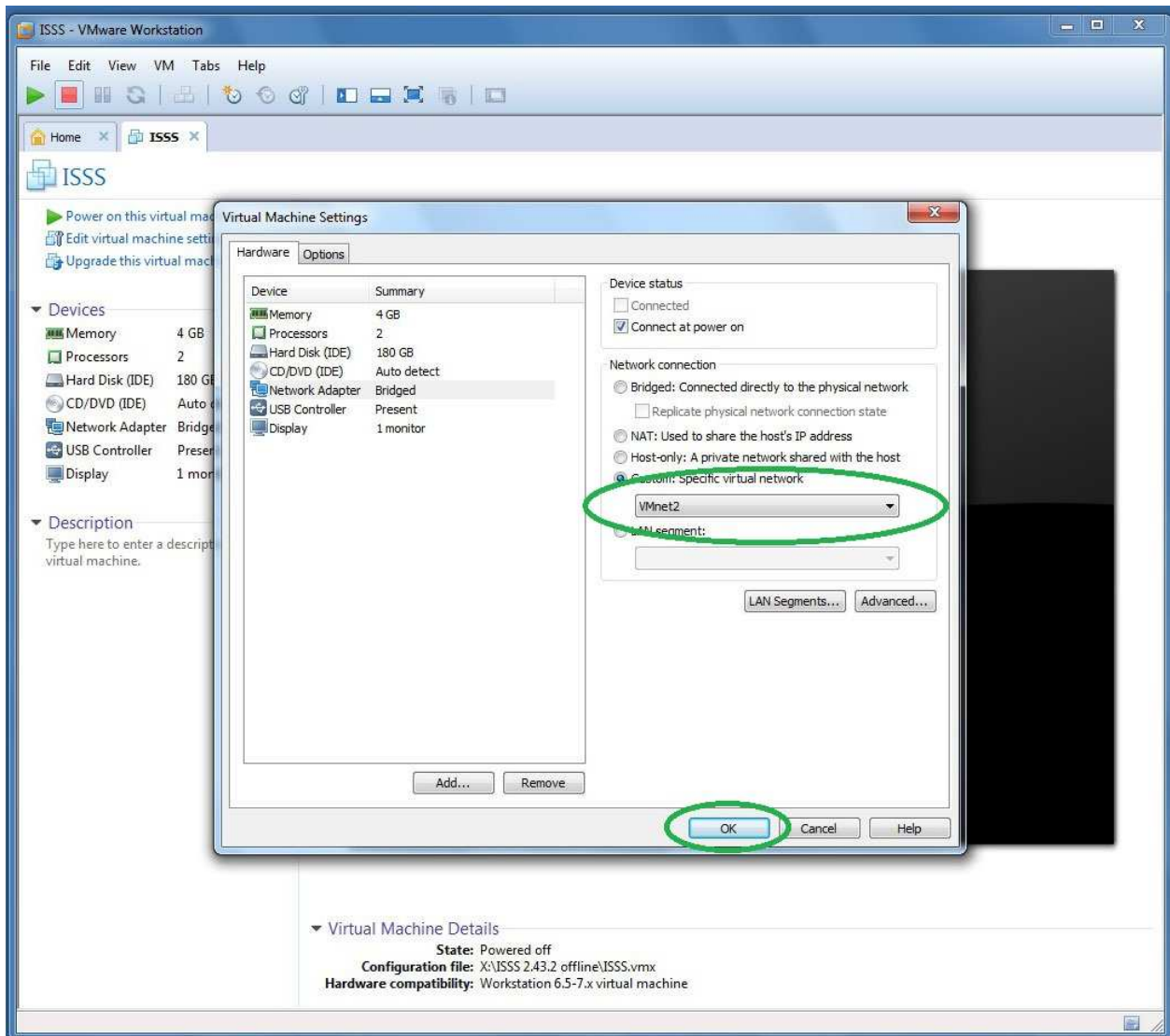
3. Configure network exactly as on picture. At green ellipse marked place for VMnet0 select network adapter which will be used for connection with ICOM, OPS or ENET cable.



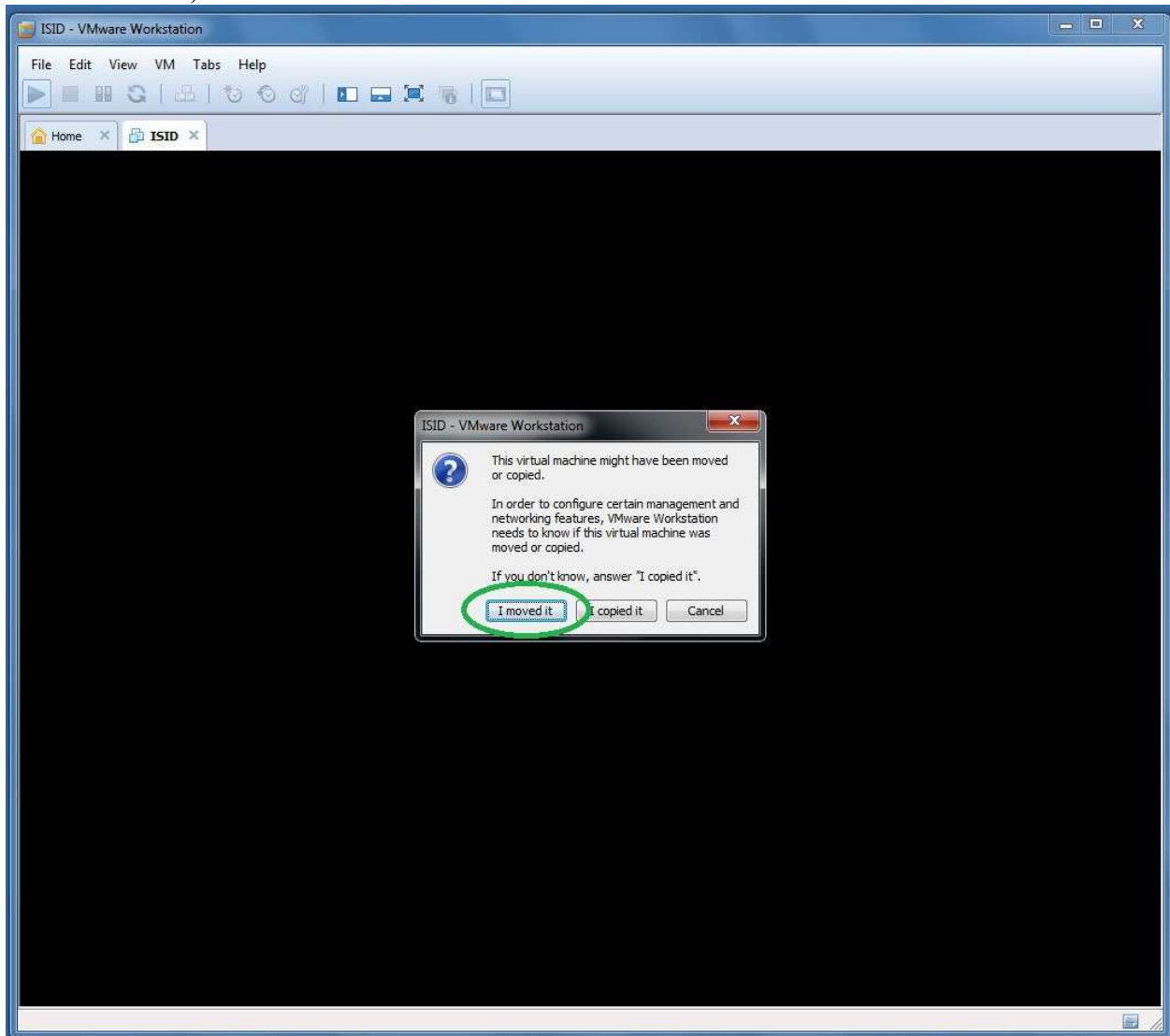
4. Open ISID or ISSS virtual machine. If you have Win x64 and host RAM more then 4Gb, then you can set ISID memory size from 1536Mb to 2048Mb. ISSS can process Exx with 2048Mb instead of 4096Mb, but will show you warnings. Don't use other values since this will cause failures.

5. Open VM properties and check Network Adapter set to VMnet2, close and boot.

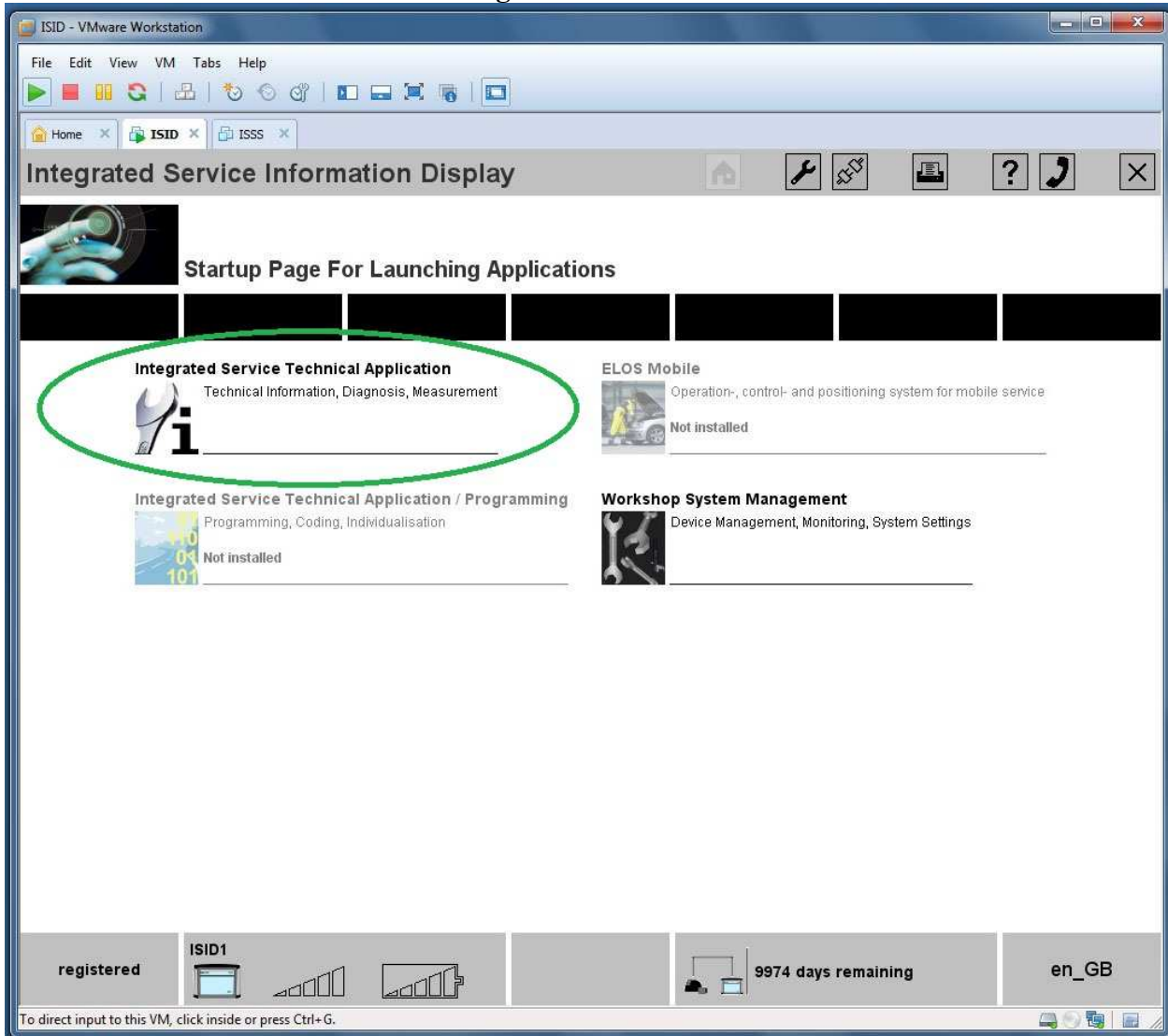


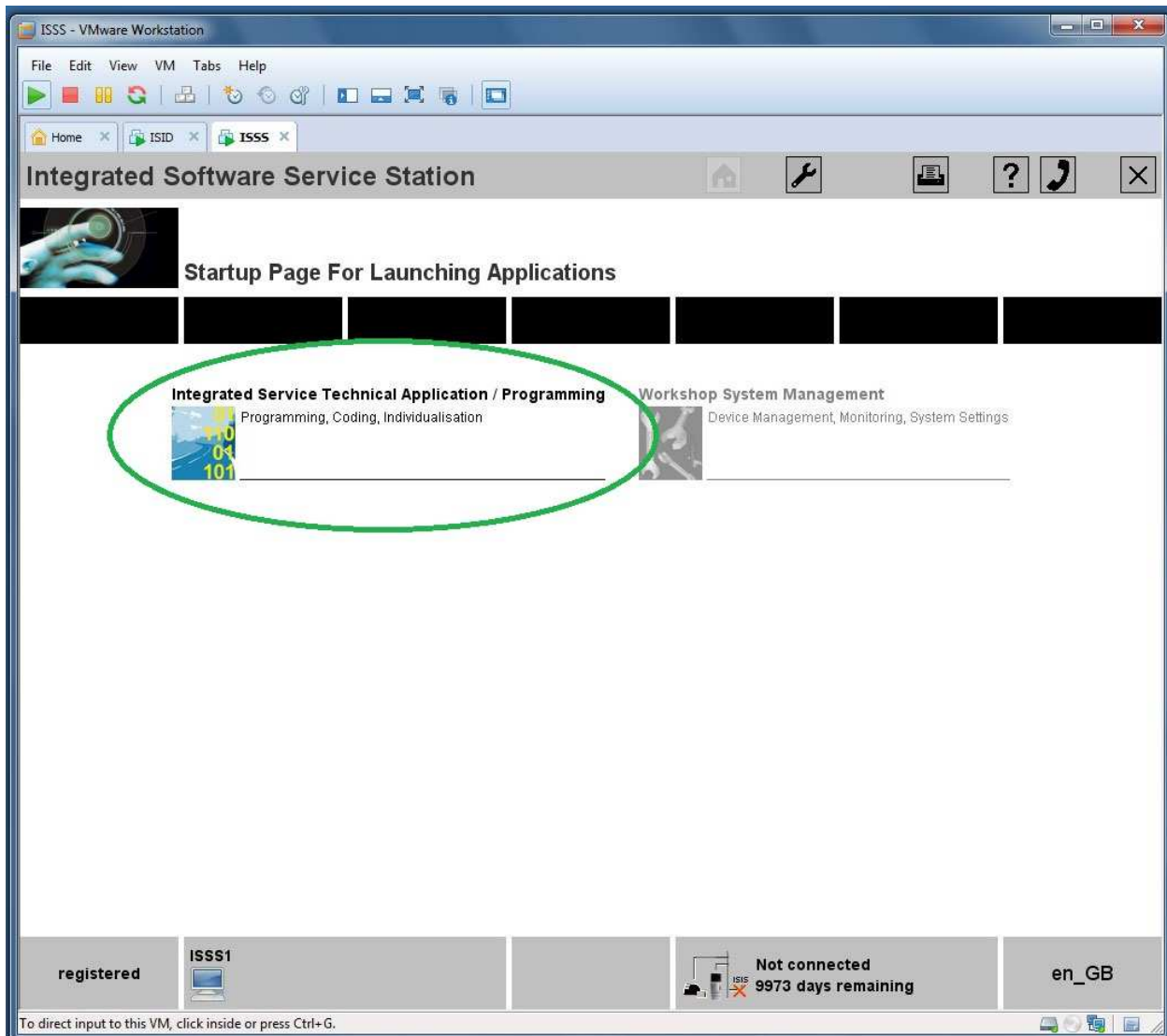


6. When asked, select "I moved it".



7. Wait until VM boots and ISTA icon gets active.

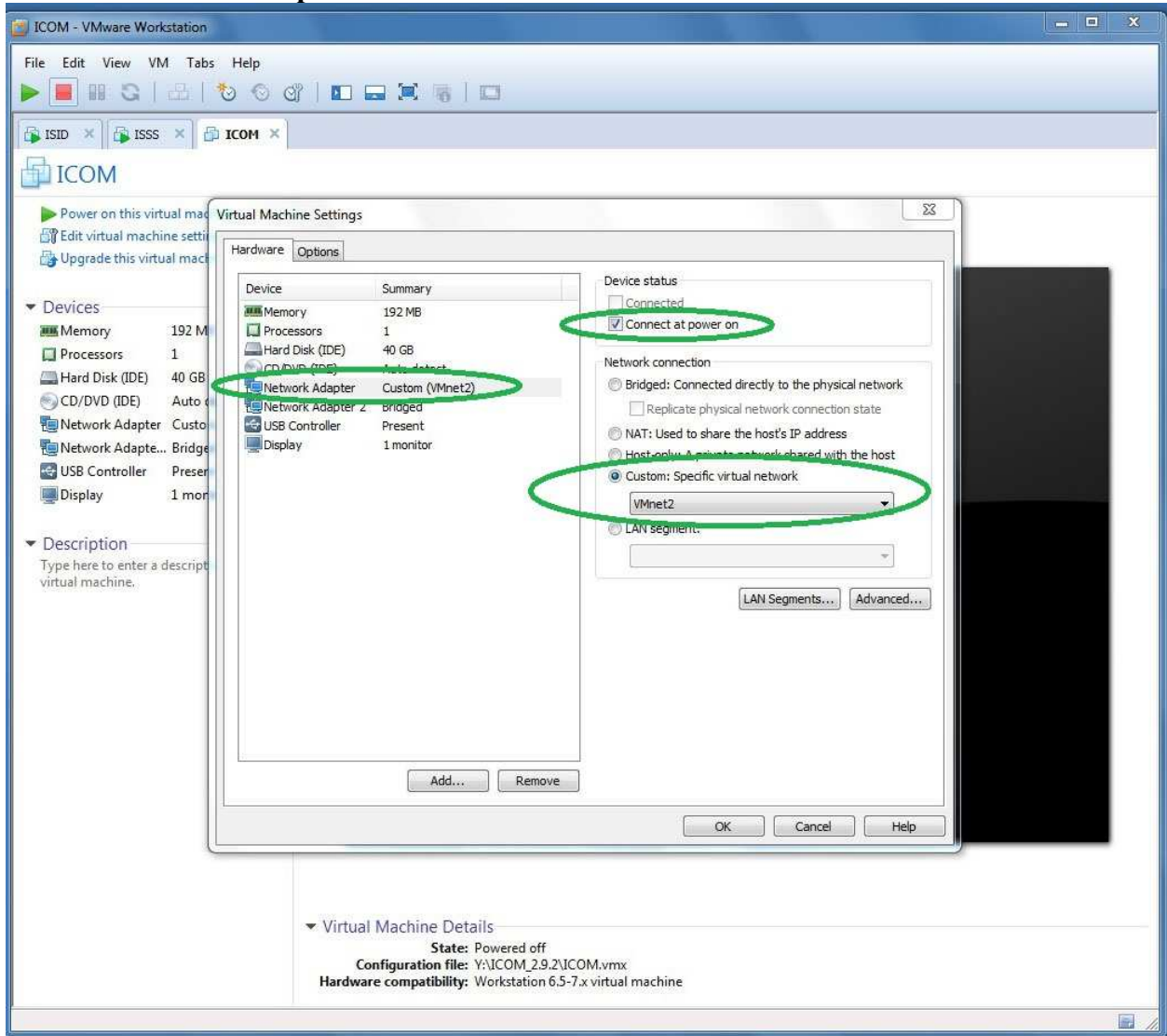


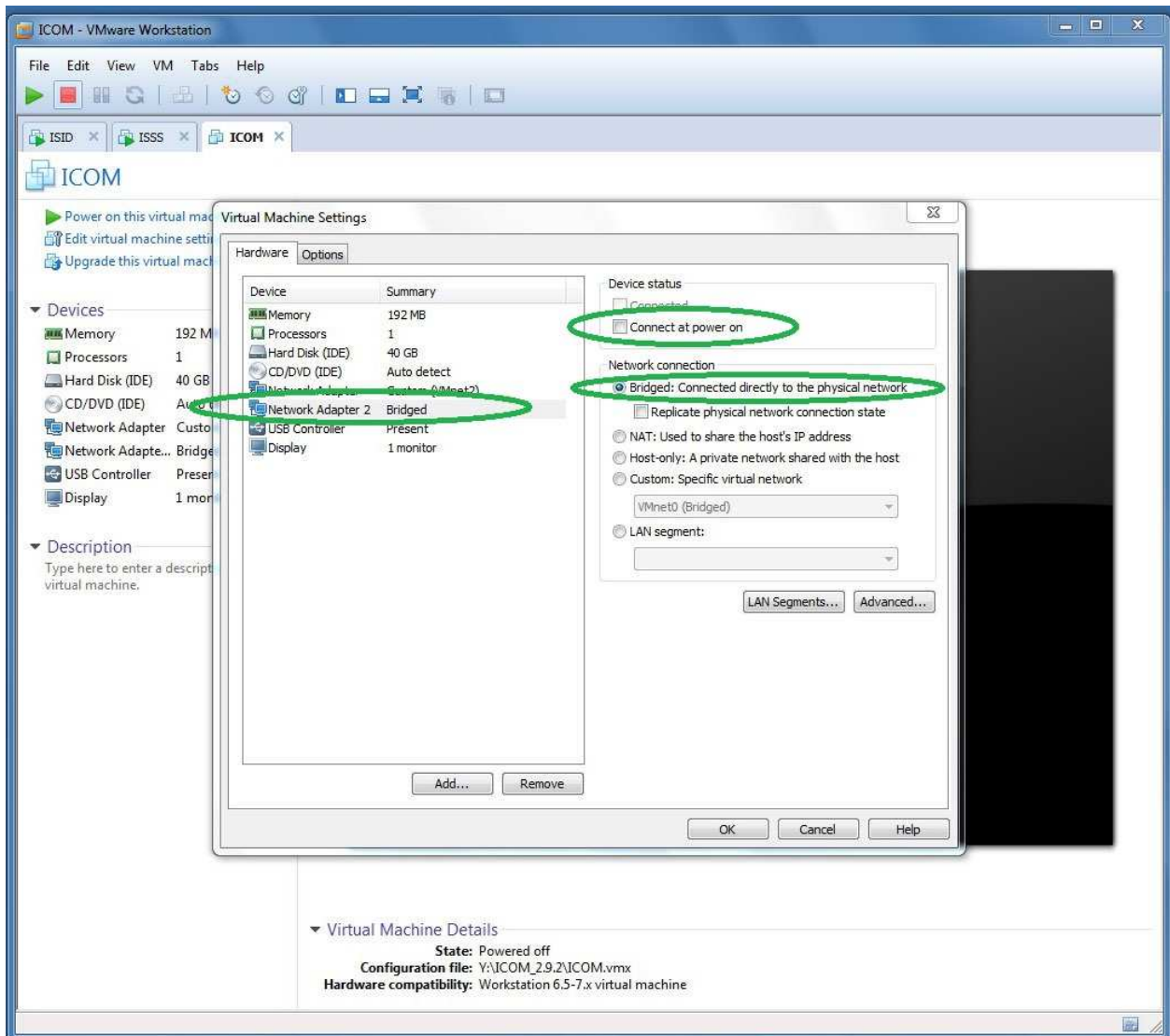


8. While not ISID nor ISSS has active input plug your USB flash disk used as protection dongle and copy K+D-CAN USB interface cable drivers on it.

9. Open ICOM Emulator in VMware, then go settings. Check first network adapter set to VMnet2 and "Connect at power on" has tick. Check second network adapter in Bridge

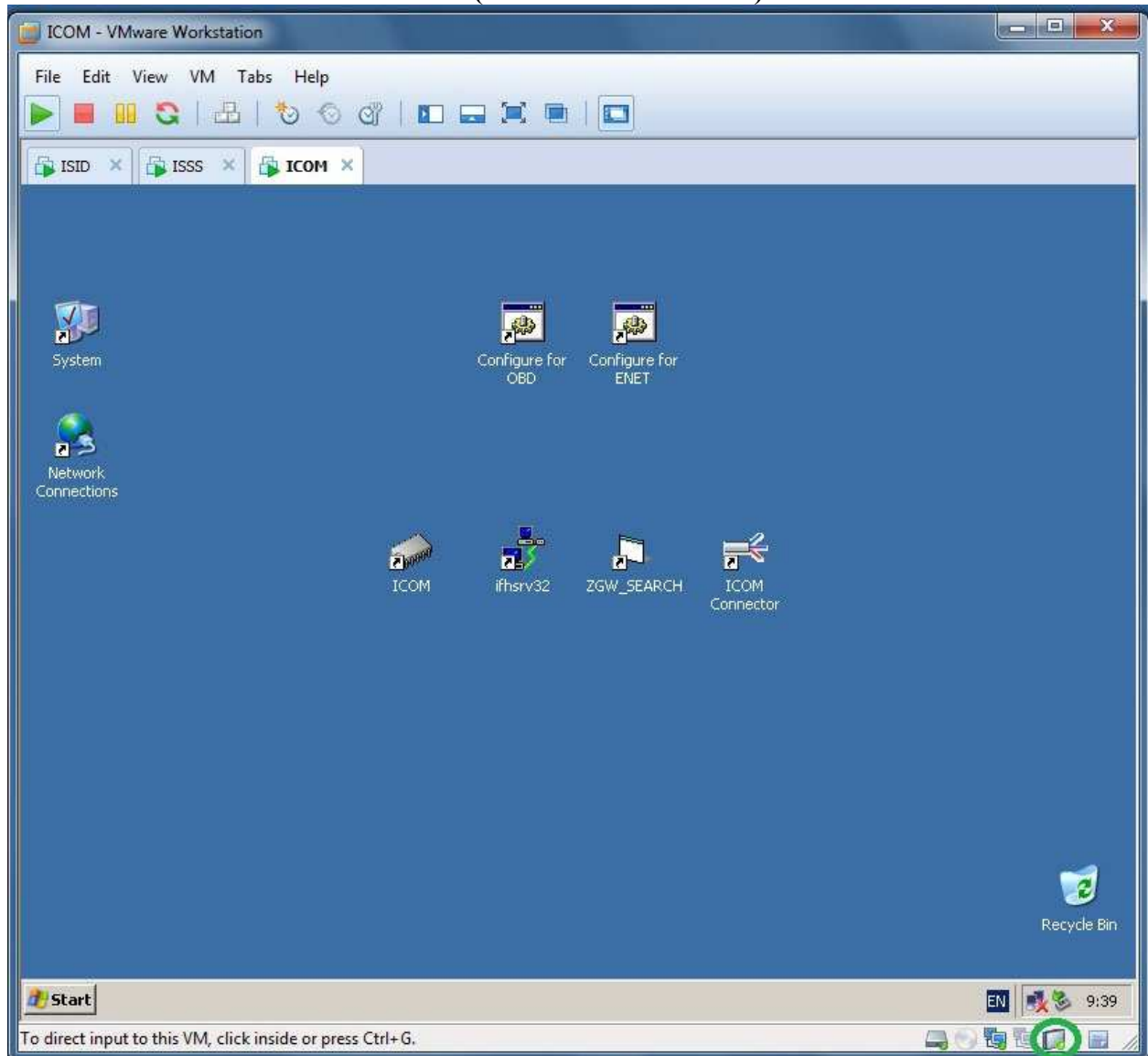
mode and "Connect at power on" is clean.

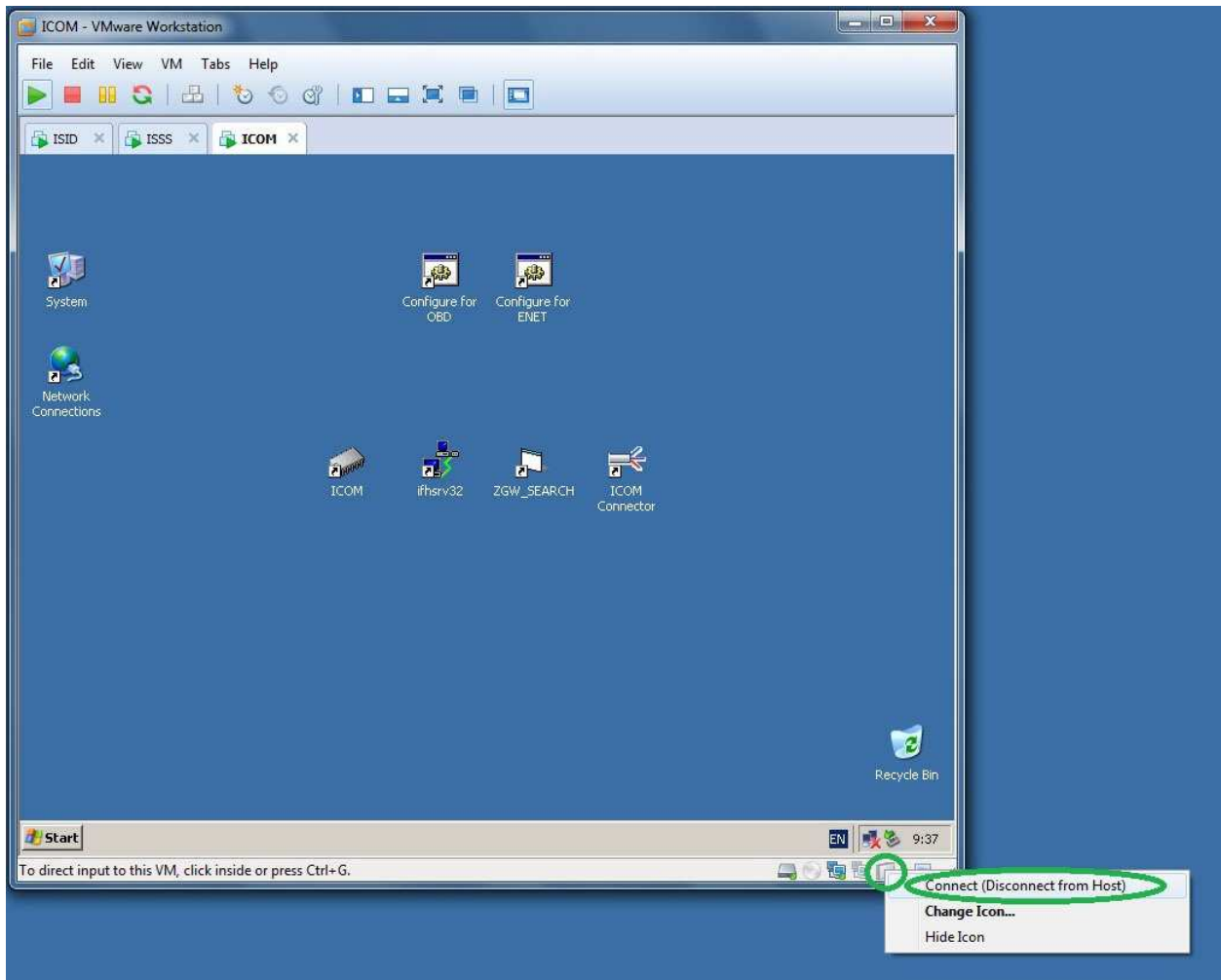




10. Boot ICOM Emulator VM, answer "I moved it" when asked. Check USB flash disk icon status on the right bottom VM window corner. If not active, then click right mouse

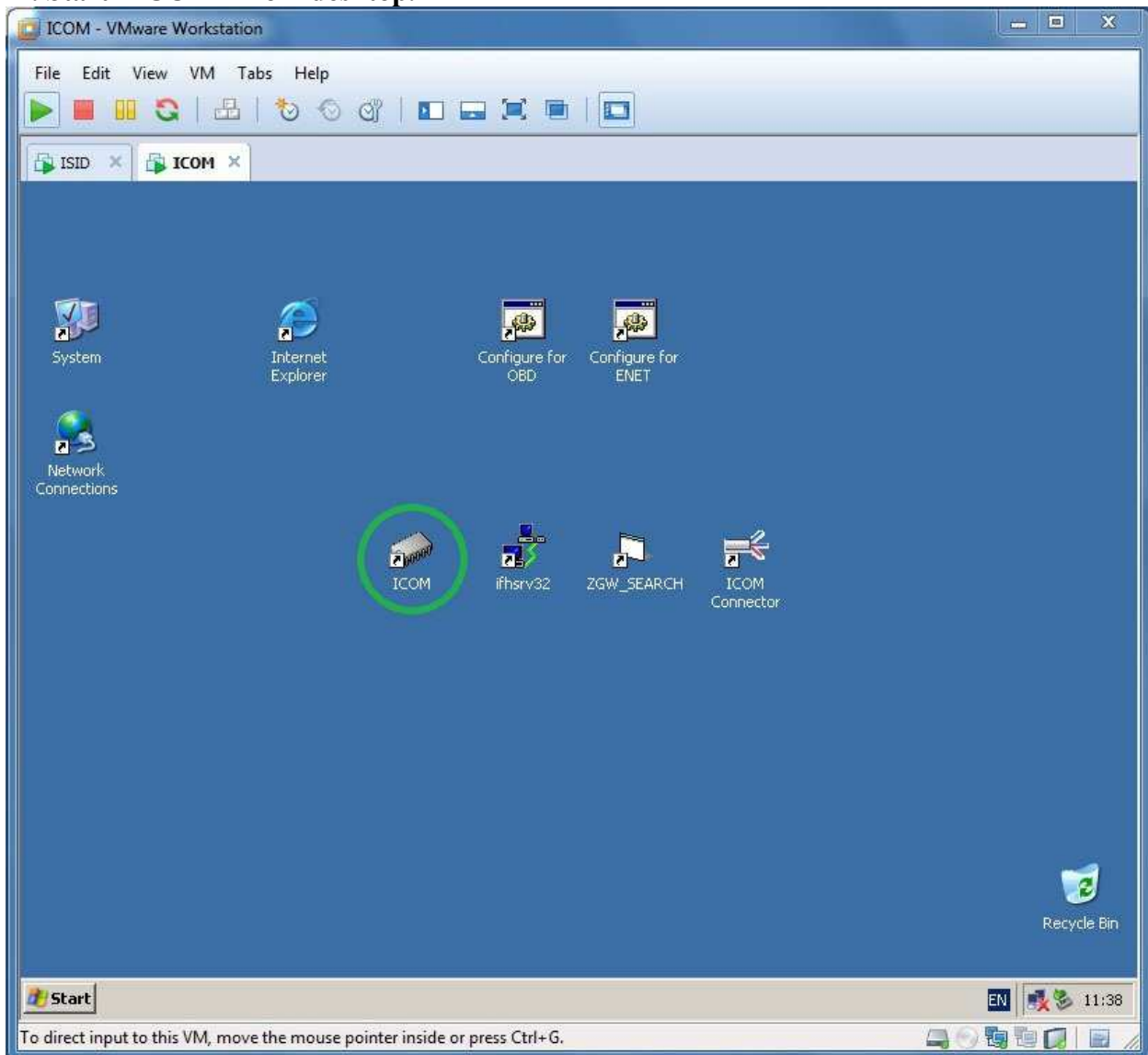
button over icon and select "Connect (Disconnect from Host)".



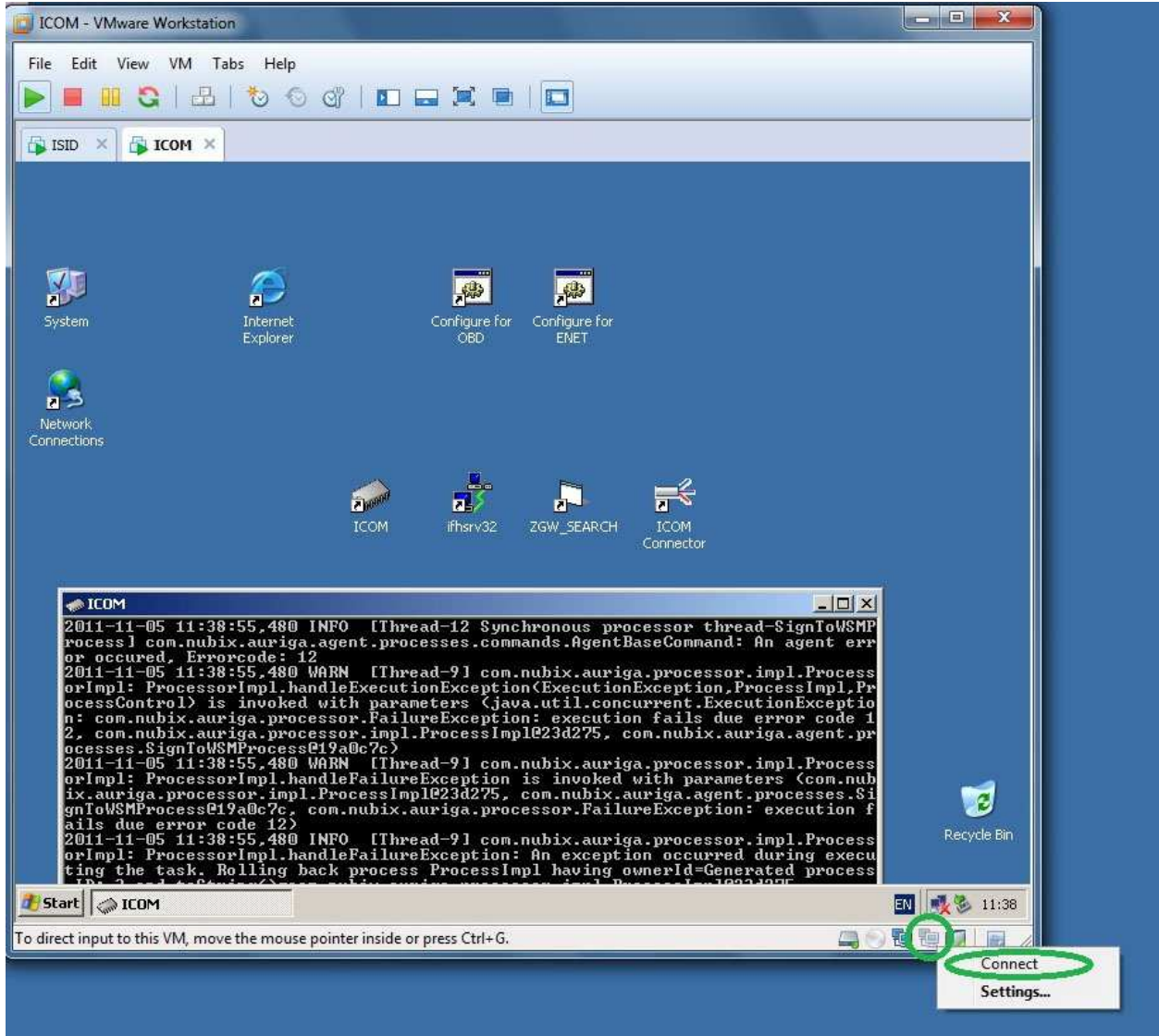


11. Connect OPS with PC network adapter and car.

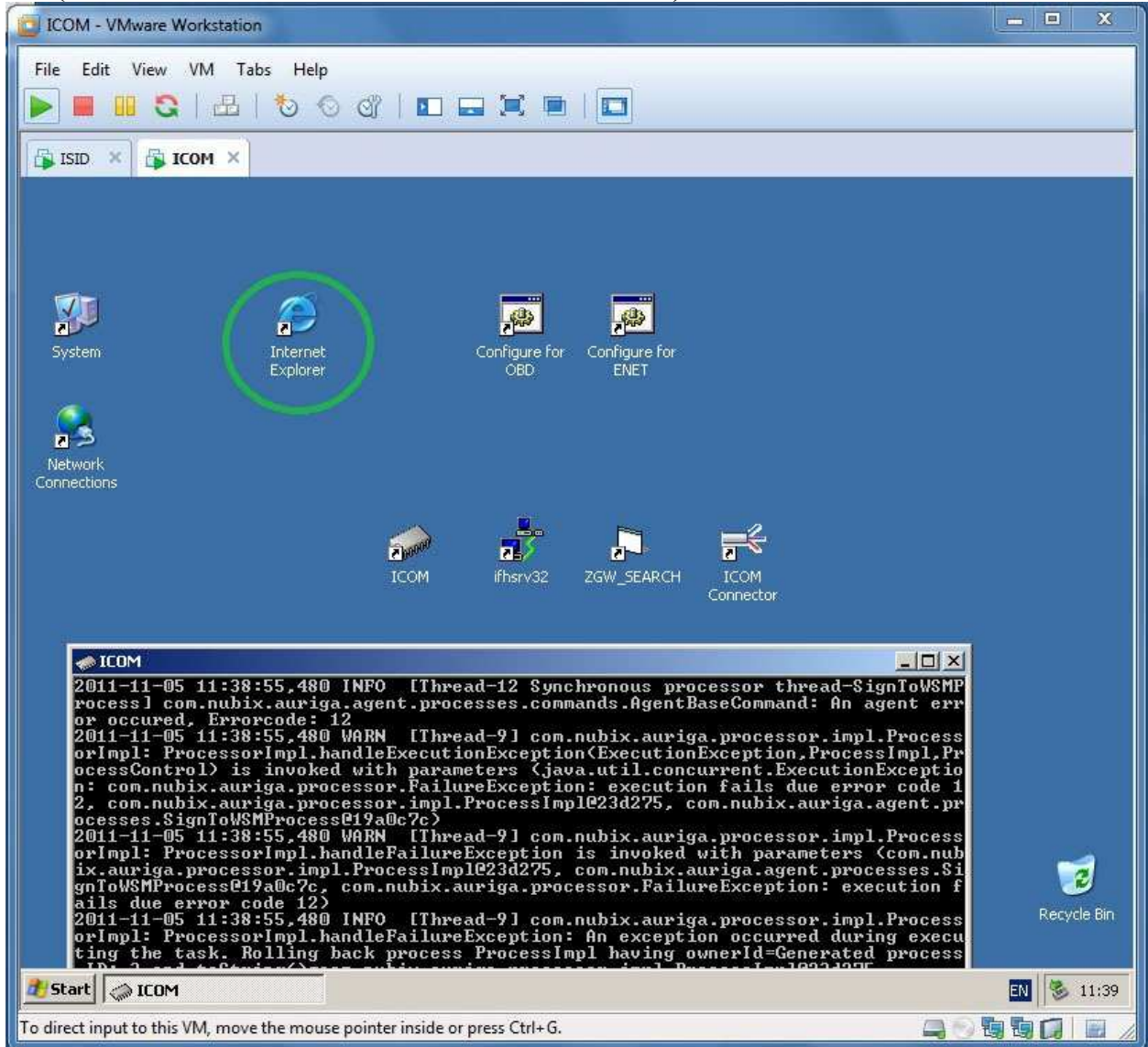
12. Start "ICOM" from desktop.



13. Click right mouse button over second connection icon on the right bottom corner and select "Connect".



14. Open Internet Explorer and access web interface of your OPS using URL <http://<OPS IP>> (chinese OPS have 192.168.68.85 or 192.168.68.30).




15. Click "VM Deactivate (Lock Device)."

OPPS Web Server - Microsoft Internet Explorer

Datei Bearbeiten Ansicht Favoriten Extras ?

Zurück Zurück Suchen Favoriten

Adresse <http://192.168.68.85/vmdeactivate>



Welcome to the OPPS Manager!

General Operations

- [VM Activate \(Release Device\)](#)
- [VM Deactivate \(Lock Device\)](#)

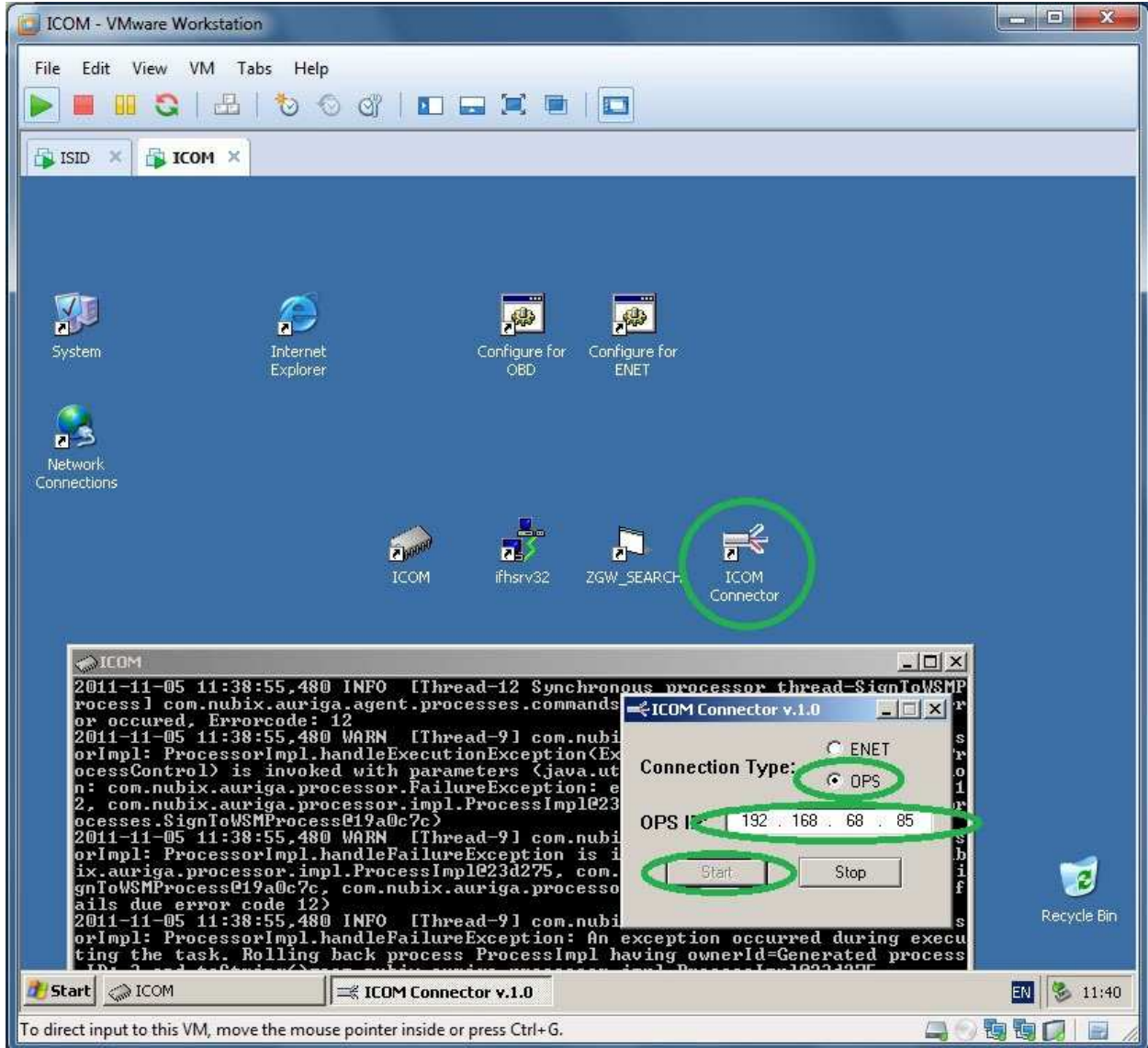
Status

Component	Status
VM Connection Manager	Not running
IFH Server	Enabled

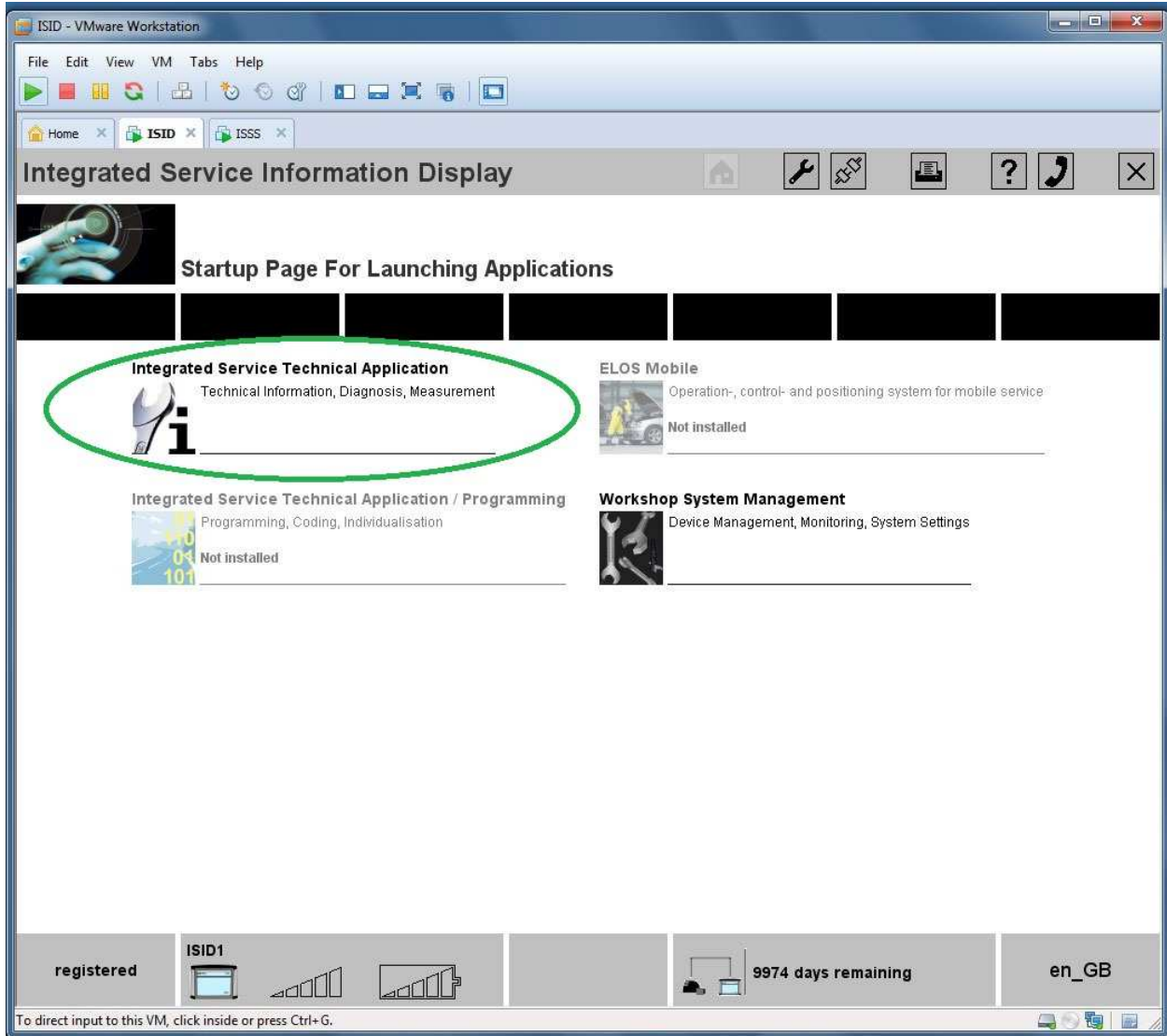
Tracing files

- [Router Trace . \(Router Backtrace\)](#)
- [Most Trace . \(Most Backtrace\)](#)
- [DLE Trace . \(DLE Backtrace\)](#)

16. Start ICOM Connector, select OPS connection type, enter OPS IP and press "Start" button.



17. Start ISTA via one-double left mouse button click over ISTA-D or ISTA-P icon in WSM interface.



ISSS - VMware Workstation

File Edit View VM Tabs Help

Home x ISID x ISSS x

Integrated Software Service Station

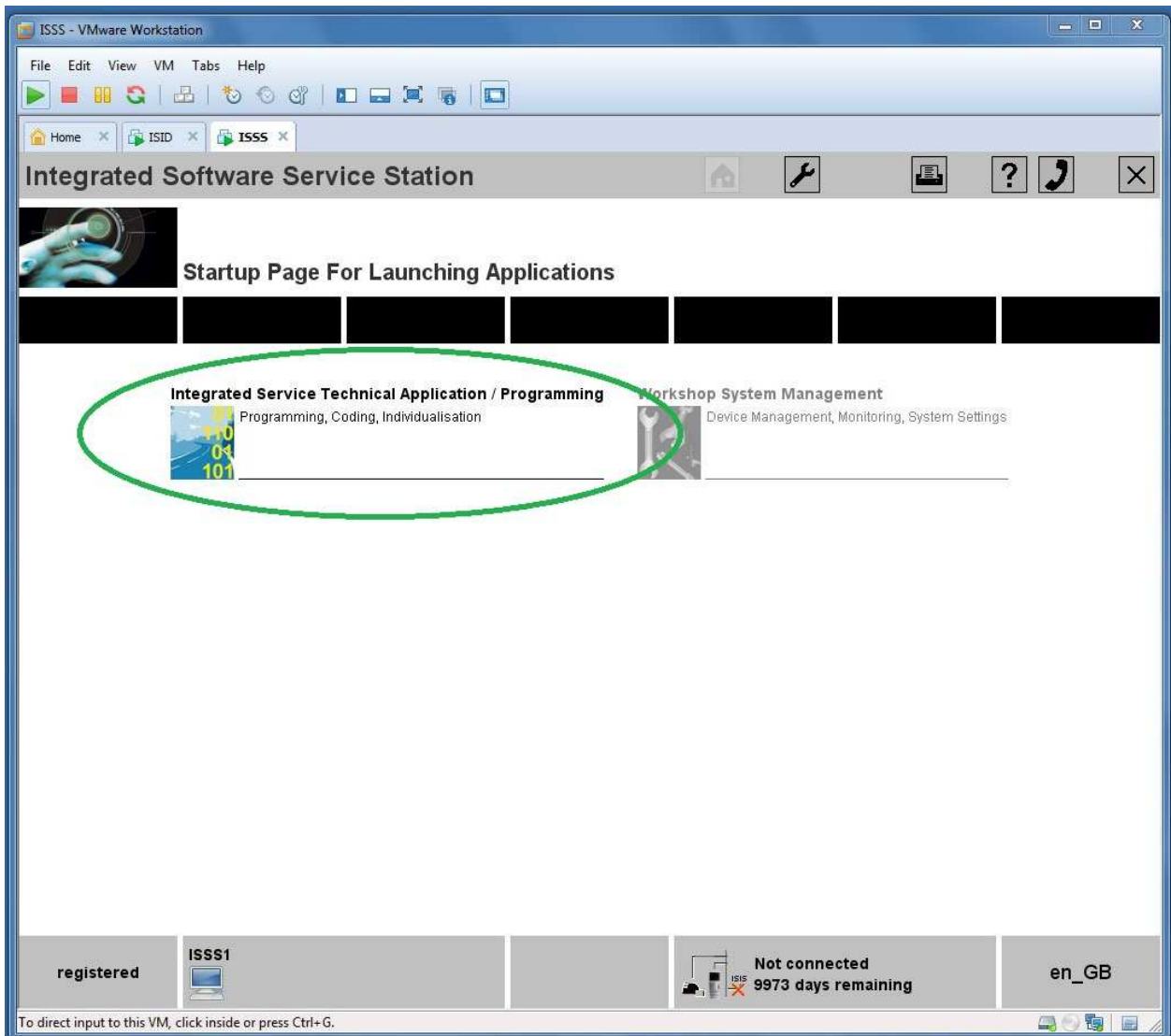
Startup Page For Launching Applications

Integrated Service Technical Application / Programming
Programming, Coding, Individualisation

Workshop System Management
Device Management, Monitoring, System Settings

registered ISSS1 Not connected 9973 days remaining en_GB

To direct input to this VM, click inside or press Ctrl+G.

The image shows a VMware Workstation window titled 'ISSS - VMware Workstation'. The interface includes a menu bar (File, Edit, View, VM, Tabs, Help), a toolbar with various icons, and a browser-like tab bar with 'Home', 'ISID', and 'ISSS' tabs. The main content area is titled 'Integrated Software Service Station' and features a 'Startup Page For Launching Applications'. Below this, there are two main tiles: 'Integrated Service Technical Application / Programming' (with a green oval around it) and 'Workshop System Management'. The bottom of the window shows a taskbar with 'registered', 'ISSS1', 'Not connected 9973 days remaining', and 'en_GB'. A footer note says 'To direct input to this VM, click inside or press Ctrl+G.'

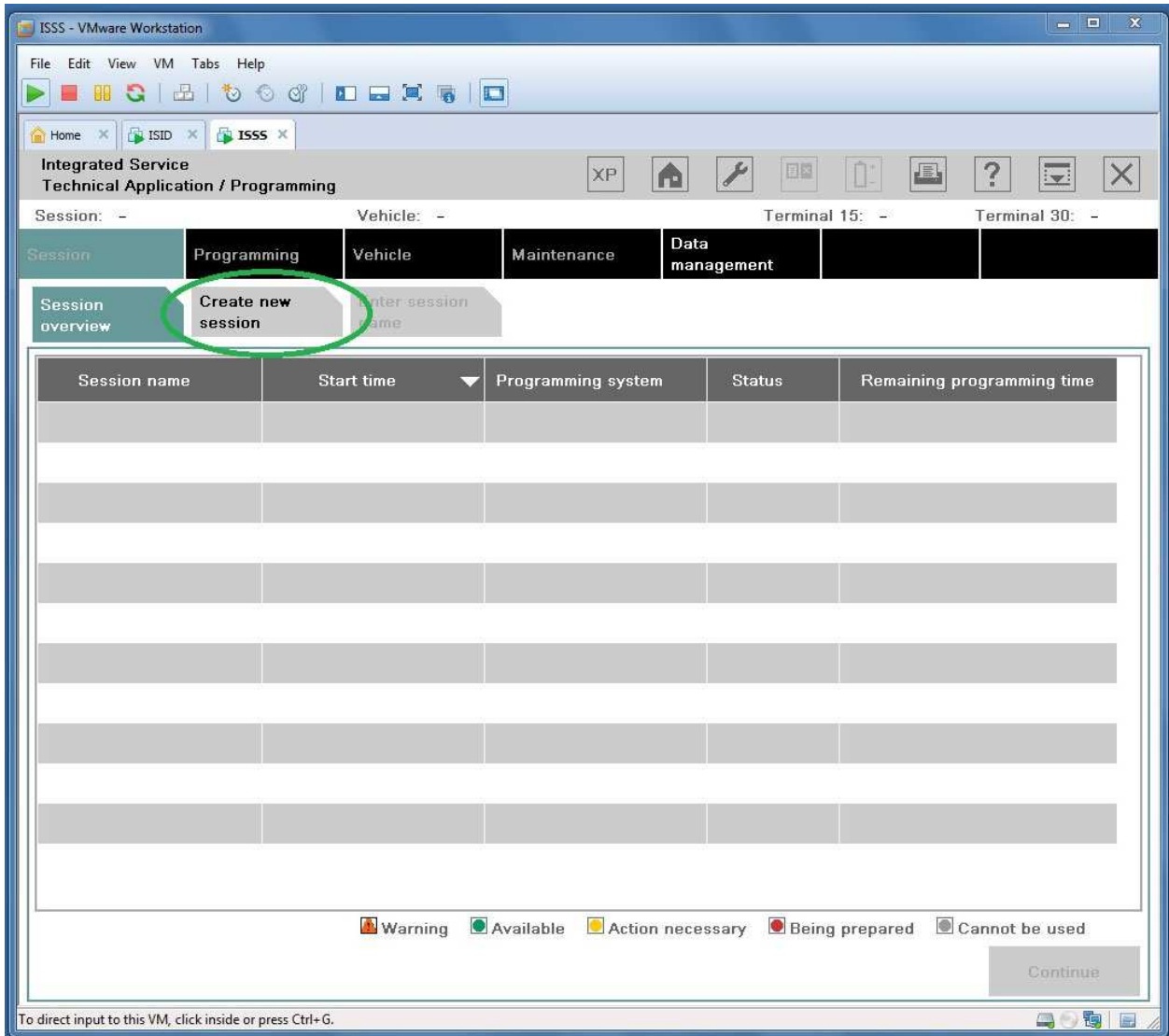
18. For ISID select "Identification", for ISSS select "Create new session".

The screenshot shows the ISID - VMware Workstation interface. The main window displays the 'Integrated Service Technical Application' with two service systems: 'BMW Service Workshop System' and 'MINI Service Workshop System'. Below the service names, there are several tabs: 'Identification', 'Vehicle test', 'Activities', and 'Service plan'. The 'Identification' tab is highlighted with a green circle. Below the tabs, there is a 'News' section with a table of updates. The table has two columns: 'News' and 'Date'. The 'Date' column is sorted in descending order. A 'Display' button is located at the bottom right of the news section.

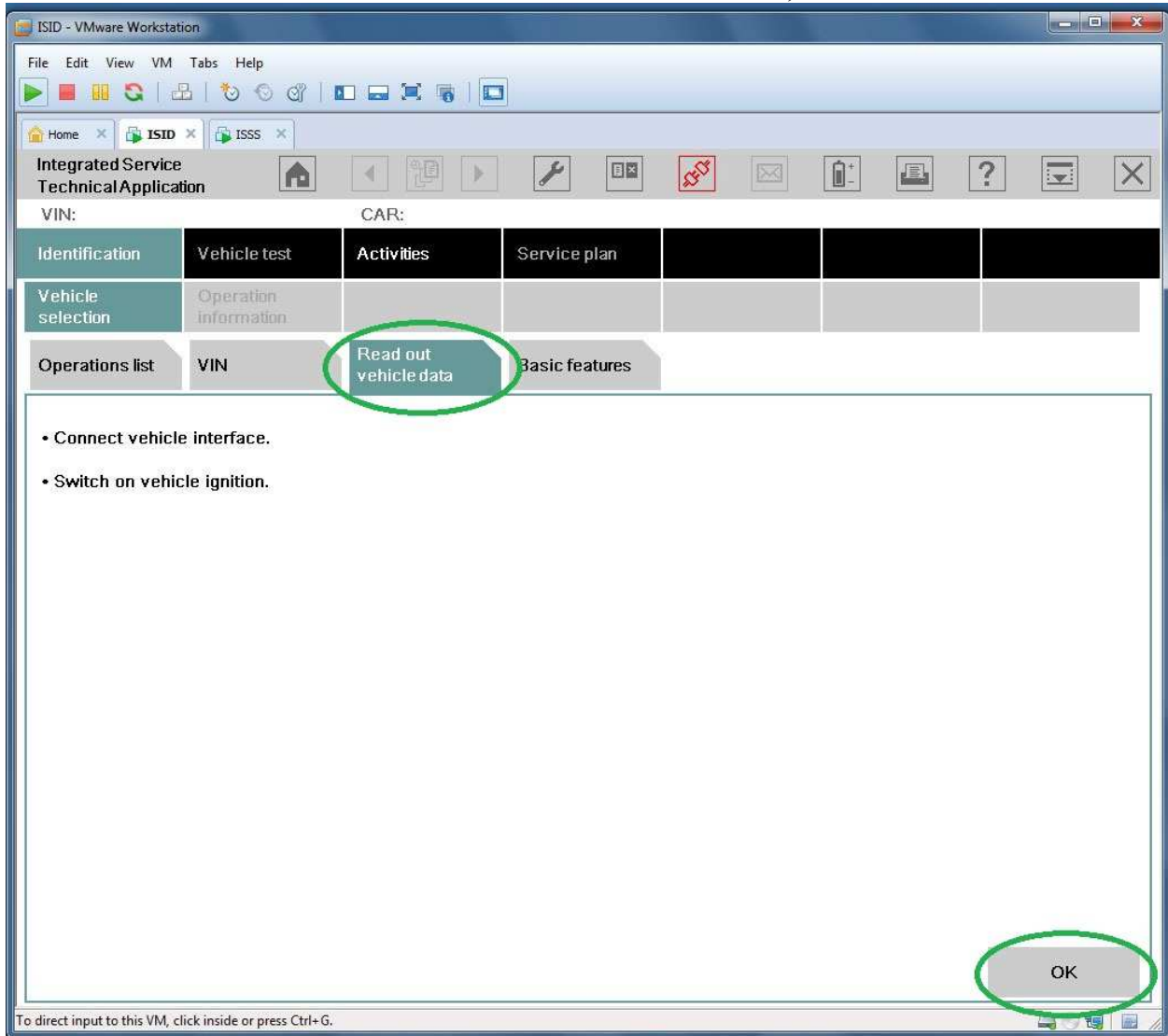
News	Date
ISTA version 2.27 - New contents for Mobile Service	15/07/2011
ISTA version 2.27 - Contents and notes, diagnosis	14/07/2011
ISTA version 2.27 - New contents for repair literature	12/07/2011
ISTA version 2.26 - New contents for repair literature	11/07/2011
ISTA version 2.25 - New contents for repair literature	18/05/2011
ISTA version 2.26 - Diagnosis contents	09/05/2011

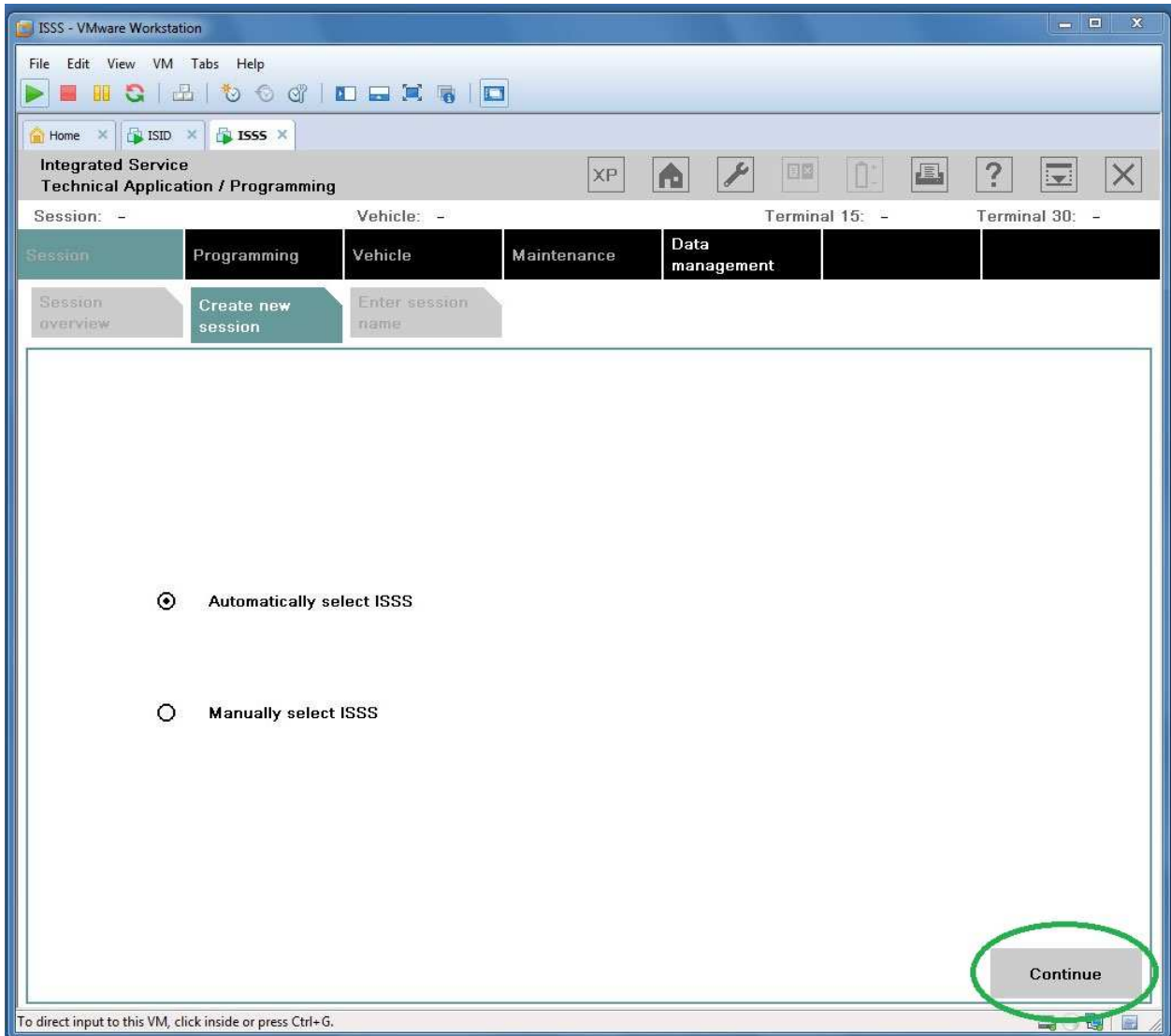
Display

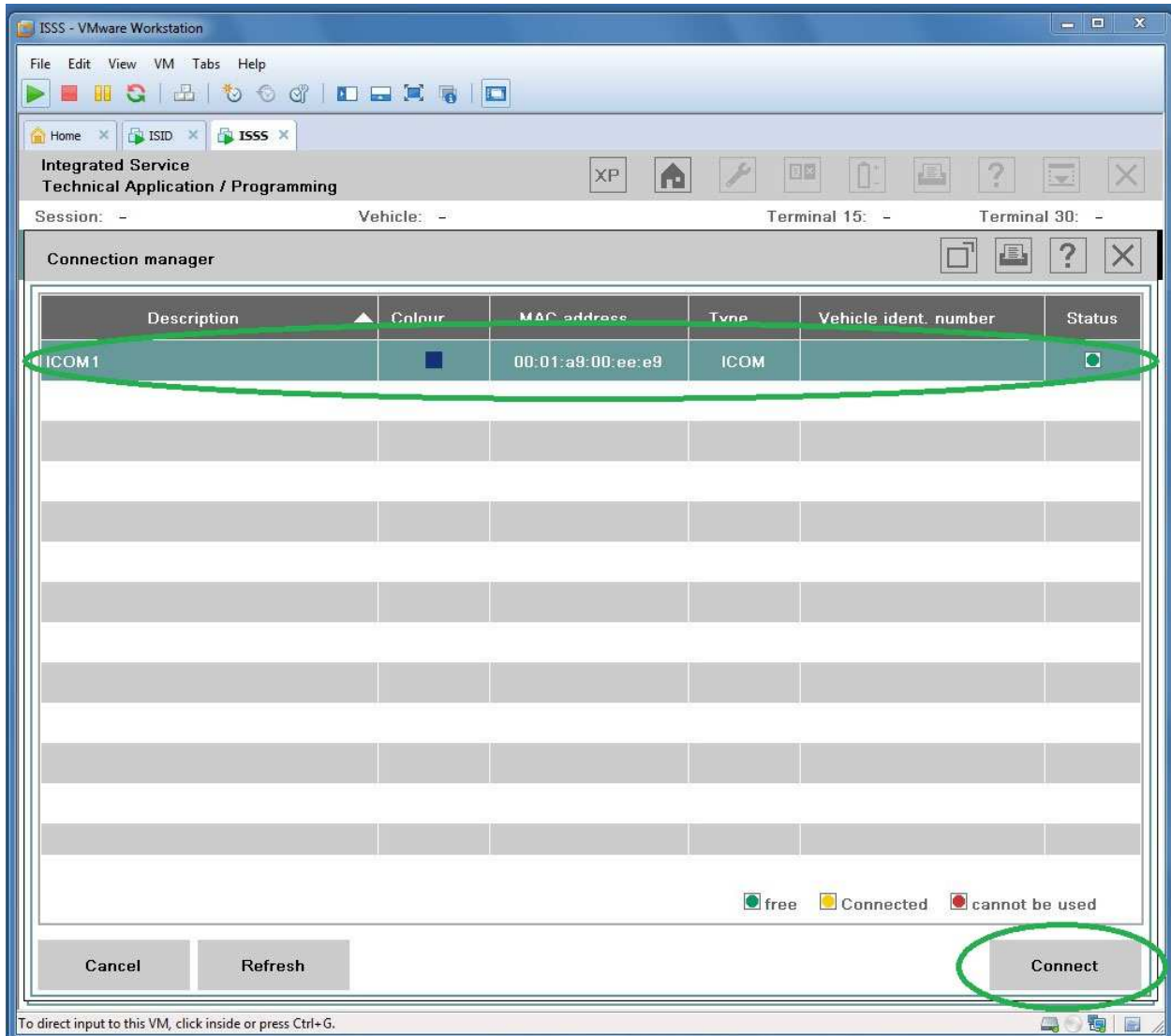
To direct input to this VM, click inside or press Ctrl+G.



19. Next for ISID click on "Read out vehicle data" then "Ok", for ISSS click "Continue".







Note: To stop ICOM black window press Ctrl-C then "Y" and Enter. OPS should have latest firmware (636).